

# Medicare-Medicaid Eligibility Issues



PAT MARTELLE, LCSW, MPH  
[MARTELLEP@DHW.IDAHO.GOV](mailto:MARTELLEP@DHW.IDAHO.GOV)  
PROGRAM MANAGER  
MEDICAID

# Checking Eligibility



- **Provider action:** go to [www.Optumidaho.com](http://www.Optumidaho.com)
- **Member action:**
  - call Optum member line: (855) 202-0973
  - call MACS (Medicaid Automated Customer Service)
    - (866) 686-4272
    - (208) 373-1424

# Eligibility Response in Molina



## Member Information

Member

**Name**

DOE, JANE

**Date of Birth**

01/01/1901

**Member ID**

0009876543

**Tracking Number :** 13277W000005038

**Date of Inquiry :** 10/4/2013 2:30:44 PM

**From Date of Service :** 10/4/2013

**To Date of Service :** 10/4/2013

**Procedure Codes :**

**HIPAA Category Code :**

# Eligibility Response in Molina



## Full Dual – Enhanced Plan

Enrollments						
Plan	Coverage Status	Coverage Level	Plan Type	Effective Date	Termination Date	
Idaho Smiles	Active	Primary	DENTAL			
<b>Coverage Code Description</b>	<b>Coverage Status</b>			<b>Effective Date</b>	<b>Termination Date</b>	
Dental Encounter/Idaho Smiles	Active					
Care Coordination Plan	Active	Secondary	MEDICAL			
<b>Coverage Code Description</b>	<b>Coverage Status</b>			<b>Effective Date</b>	<b>Termination Date</b>	
Dual Member	Active					
Healthy Connections Benefit Plan	Active	Secondary	MEDICAL			
<b>Coverage Code Description</b>	<b>Coverage Status</b>			<b>Effective Date</b>	<b>Termination Date</b>	
Enhanced Coverage	Active					
Idaho Behavioral Health Plan	Active	Secondary	MEDICAL			
Part B Premium	Active	Secondary	MEDICAL			
<b>Coverage Code Description</b>	<b>Coverage Status</b>			<b>Effective Date</b>	<b>Termination Date</b>	
Part B Premium Coverage	Active					
Copay						
Copay	Effective Date	Termination Date				
Exempt						
Other Insurance						

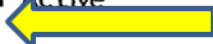
# Eligibility Response in Molina



## Duals – MMCP (Medicare-Medicaid Coordinated Plan)

### Enrollments

Plan	Coverage Status	Coverage Level	Plan Type	Effective Date	Termination Date
Part B Premium	Active	Secondary	MEDICAL		
Coverage Code Description	Coverage Status			Effective Date	Termination Date
Part B Premium Coverage	Active				
MMCP - Medicaid Only Covered Services	Active	Secondary	MEDICAL		
Coverage Code Description	Coverage Status			Effective Date	Termination Date
A&D Waiver Coverage	Active				
MMCP Coverage	Active				
Care Coordination Plan	Active	Secondary	MEDICAL		
Coverage Code Description	Coverage Status			Effective Date	Termination Date
Dual Member	Active				



### Copay

Copay	Effective Date	Termination Date
Exempt		

# Eligibility Response in Molina



## QMB (Qualified Medicare Beneficiary only)

### Enrollments

Plan	Coverage Status	Coverage Level	Plan Type	Effective Date	Termination Date
Part B Premium	Active	Secondary	MEDICAL		
Coverage Code Description	Coverage Status			Effective Date	Termination Date
Part B Premium Coverage	Active				
Open Access Benefit Plan	Active	Secondary	MEDICAL		
Coverage Code Description	Coverage Status			Effective Date	Termination Date
Medicare Co-insurance & Deductible					



### Copay

Copay	Effective Date	Termination Date
Exempt		

### Other Insurance

# Who is in the IBHP?



- **Q: Are all Medicare-Medicaid individuals enrolled in the Idaho Behavioral Health Plan (IBHP) administered by Optum?**
- **A: No, only individuals enrolled in either the Medicaid Basic or Enhanced Plan are enrolled in the IBHP. Individuals who do not receive full Medicaid benefits, such as QMB-only or those enrolled in the Medicare-Medicaid Coordinated Plan (MMCP) are not enrolled in the IBHP.**

# QMB Services



- **Q: What benefits do QMB-only individuals have since it is not full Medicaid coverage?**
- **A: Medicaid only pays for the coinsurance and deductible for Medicare-covered services. If the service is not covered by Medicare, the claim is not reimbursable through Medicaid (Molina).**



# Billing for QMB



- **Q: How do I bill for QMB-only individuals?**
- **A: When a Medicare-eligible provider delivers a Medicare-covered service to an individual with QMB status, that claim is billed to Medicare. After the claim is paid by Medicare, it is automatically crosses over to Medicaid (Molina) to have the coinsurance or deductible paid.**

*(Providers must be enrolled with Medicare and enrolled as a cross-over provider with Medicaid in order to have their payment automatically processed by Molina.)*

# Scope of MMCP



- **Q: What benefits do MMCP individuals have?**
- **A: Individuals enrolled in the MMCP receive the majority of their coverage through their Medicare Advantage Plan. The only Medicaid-reimbursable service for these individuals is psychosocial rehabilitation (PSR).**

*(PSR is Community Based Rehabilitation Services in the IBHP)*

# Billing for MMCP



- **Q: How do I bill for MMCP individuals?**
- **A: Bill Medicare for Medicare-covered outpatient behavioral health services. Bill PSR to Medicaid (Molina).**

# Medicare-Medicaid in the IBHP



- **Q: What benefits do Medicare-Medicaid individuals have who are enrolled in the Basic or Enhanced Plan?**
- **A: These individuals are enrolled in the IBHP and the benefit package administered by Optum is available to them.**

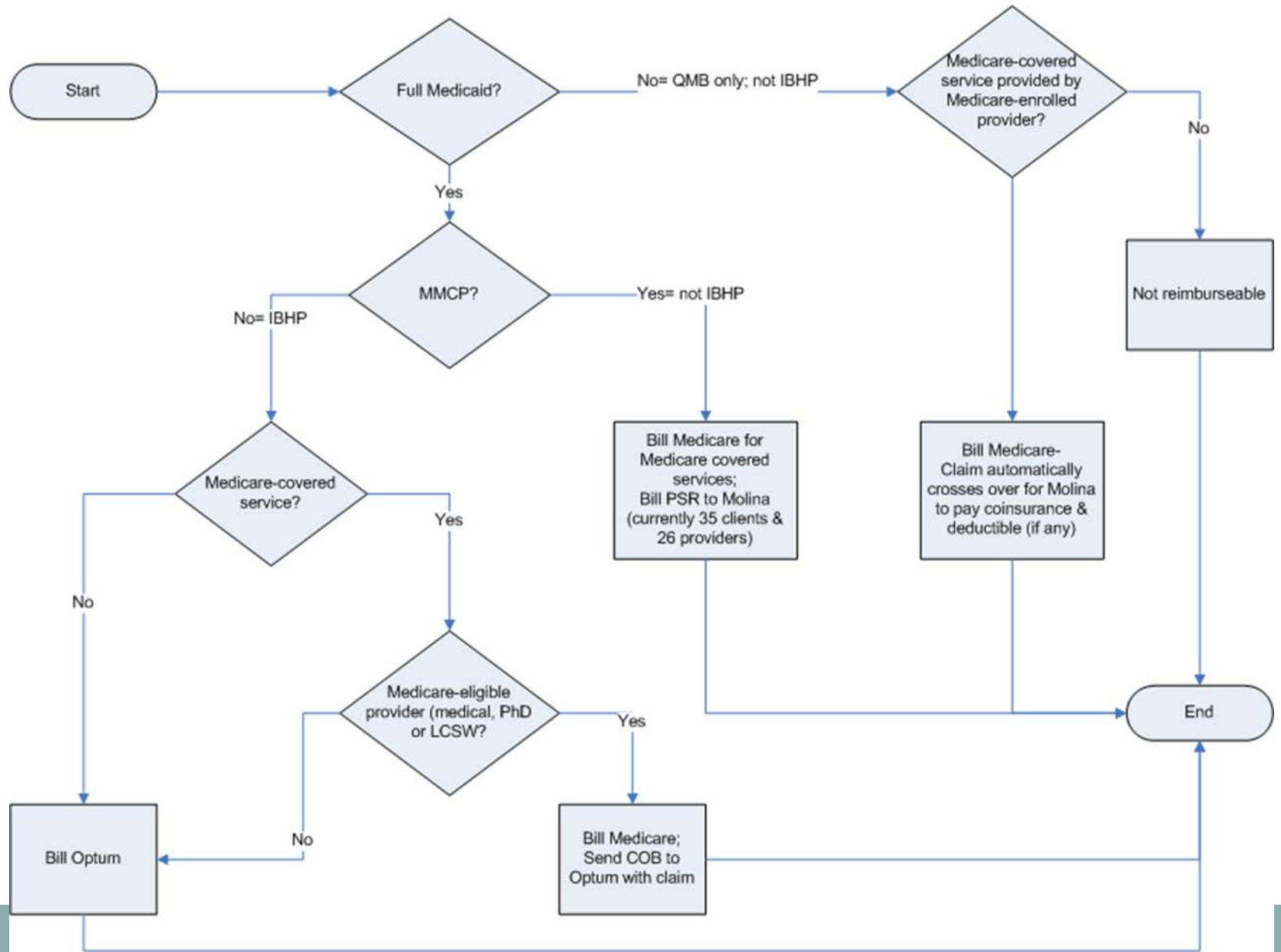
# Billing for IBHP



- **Q: How do I bill for IBHP-enrolled members?**
- **A: Providers must comply with Optum's billing requirements in order to receive reimbursement for services delivered. Agencies and practitioners must enroll as an Optum provider to continue to be reimbursed for services provided after October 30, 2013.**

*(Please visit the Optum website at [www.OptumIdaho.com](http://www.OptumIdaho.com) for more information.)*

# Medicare-Medicaid Billing Pathways



# QUESTIONS?

